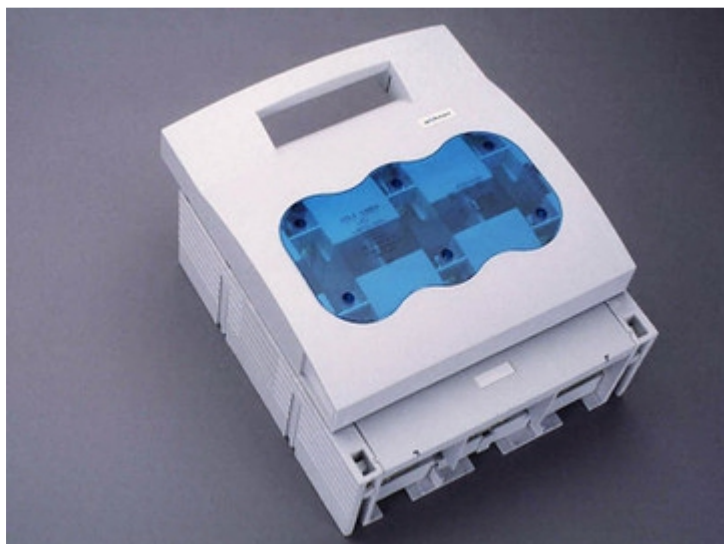


## NH fuse switch-discon. size 3, 630 A, panel mounting (33 203)



### Description

#### Article

Part No.: 33 203

QUADRON® Panel

NH fuse switch-discon. size 3, 630 A, panel mounting

connection screw M12

#### System

Mounting plate

Product group 09

Subgroup 12

pack size 1

EAN 4021267332037

#### Advantages of the product

Disconnectors are equipped with arc chambers.

The shock protection is split into 2 for safe connection of the conductors.

Self-closing inspection holes, which can be punched out, are available in the cover.

Catalog page 2015 : 6/19

eCl@ss 6.1 27142108  
eCl@ss 7.1 27142108  
ETIM 4.0 EC001040  
ETIM 5.0 EC001040

## Approvals

### Standards

IEC 60947-1:2007 + A1:2010 + A2:2014  
IEC 60947-3:2008 + A1:2012

### Approvals

IEC (CB), Germanischer Lloyd, KEMA, CCC



Type number: LTS-3

CCC certificate: 2004010302117263

## Product data

### Electrical data

Rated current (IEC): 630 A  
Rated voltage (IEC) AC: 690 V  
Rated voltage (IEC) DC: 440 V

Utilisation category AC-23B (400V)  
AC (IEC 60947-3) : AC-22B (690V)  
AC-21B (690V)  
AC-20B (1000V) at pollution degree 2

visible information required if used at more than 690V AC: do not switch under load

Utilisation category DC specifications: 2 current paths (L1,L3) in series  
DC (IEC 60947-3) : DC-22B (440V)  
DC-21B (440V)  
DC-20B (1000V) at pollution degree 2

visible information required if used at more than 440V DC: do not switch under load

Power dissipation:

The power dissipation at a typical load of 80% of the rated current results to 23 W.  
(The power dissipation for operation with rated current would be 36 W.)

rated isolation voltage  $U_i$  (AC): 800 V  
Rated surge voltage  $U_{imp}$  : 6 kV  
max. permitted voltage (IEC) AC: 800 V  
max. permitted voltage (IEC) DC: 800 V

rated peak withstand current  $I_{pk}$  : 35.2 kA  
cond. rated short-circuit current with fuses: 50 kA / 690V  
approved with fuse links of characteristics: gG  
rated short-time withstand current  $I_{CW}$  : 15,1kA / 1s

for fuse links IEC 60269-2-1 (I) / DIN VDE 0636-201 size 3 up to 48W power dissipation

Entsprechend den angegebenen AC- und DC- Schalteigenschaften und unter Berücksichtigung der Überlastbedingungen, sind gewisse Abstände zu geerdeten Metallteilen einzuhalten. Nähere Informationen auf Anfrage.

Bei Verwendung als Trennschalter ist die Einhaltung der Abstände nicht erforderlich.

Degree of protection IP30 at front, degree of protection near terminal depends on installation

## Mechanical data

W x H x D: 256 x 300 x 143

Weight: 490 kg/100

Poles: 3-pole

front degree of protection: IP30

## Terminal points

screw M12 :

Md 35 - 40 Nm

Accessories:

Clamp connection: Cu 150-300mm<sup>2</sup> s(r), f+AE; la. Cu 25x1-13; 6-8Nm torque

single wedge clamp terminal: Cu, Al\* 150-300mm<sup>2</sup> s(r), s(s), f, f+AE; 6-8 Nm torque

double wedge clamp terminal: Cu 2x 150-185mm<sup>2</sup> s(r), s(s), f+AE; 6-8Nm torque

\*Connections are not maintenance-free if aluminium conductors are used.

## Material properties

Main body: temperature stability 125°C,  
self-extinguishing in acc. to UL 94,  
creepage resistance CTI 200,  
halogen-free

Shock protection cover: temperature stability 125°C,  
self-extinguishing in acc. to UL 94,  
creepage resistance CTI 200

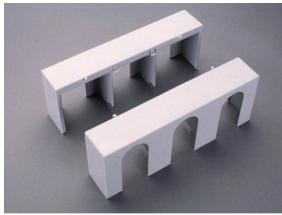
Handle: temperature stability 125°C,  
self-extinguishing in acc. to UL 94,  
creepage resistance CTI 200,  
halogen-free

Contacts: spring-loaded copper contacts, silver plated

## Version

Variant with electronic fuse monitoring: 33 332 Variant with electromechanical fuse monitoring: 33 151

## Accessories



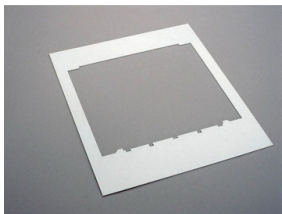
**33 144**

cover for cable lugs  
for NH fuse switch disconnecter size 3



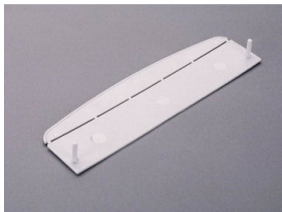
**33 147**

prism terminal, double  
2x 150 mm<sup>2</sup>  
size 3



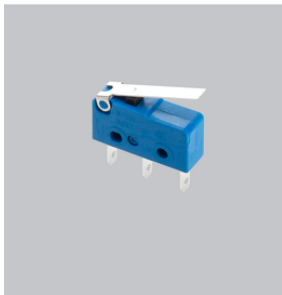
**33 154**

Trim frame  
290 x 330  
size 3



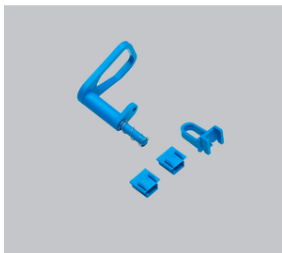
**33 155**

barrier for handle  
for fuse switch-disconnector size 1-3



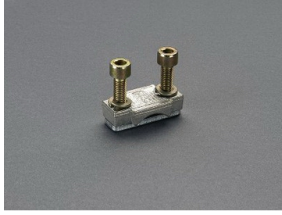
**33 156**

pilot switch for lid position  
pilot switch: 250V AC / 5A; 30V DC / 4A  
Size 000, 00, 2, 3



**33 157**

lid interlock  
for sealing wire and padlocks  
Size 1 - 3



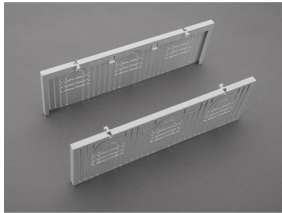
**33 165**  
clamp-type connection  
150-300 mm<sup>2</sup>  
size 3



**33 168**  
prism terminal for fuse switch-disconnector  
150-300 mm<sup>2</sup>, Cu and Al  
size 3



**33 385**  
prism terminal, double  
2x 185 mm<sup>2</sup>  
size 3



**33 419**  
connection shroud  
for NH fuse switch-disconnector size 3, maximum 600A



**33 272**  
extension for 2 cable lugs  
size 3